

FULLY BUILT-OUT DENTAL CONDO

MEDICAL OFFICE SPACE FOR LEASE



WHAT MATTERS TO YOU >

LOCATION

CONVENIENTLY SITUATED NEAR I-66,
ROUTE 29, AND ROUTE 28 FOR EASY
ACCESSIBILITY

SIZE

1,382 SF

14701 LEE HWY

SUITE 306
CENTREVILLE, VA 20121

ADDITIONAL FEATURES

- Fully built-out dental suite, ready for immediate use
- Three operatories with sinks, cabinetry, plumbing, and electrical in place—plug-and-play setup
- High-end finishes, including custom cabinetry and elegant marble countertops throughout
- Spacious and welcoming waiting room
- Private restroom for staff and patients
- Ideal for dentists, orthodontists, or general medical practitioners
- Abundant free and unreserved parking for staff and patients
- Prime signage opportunity for enhanced visibility

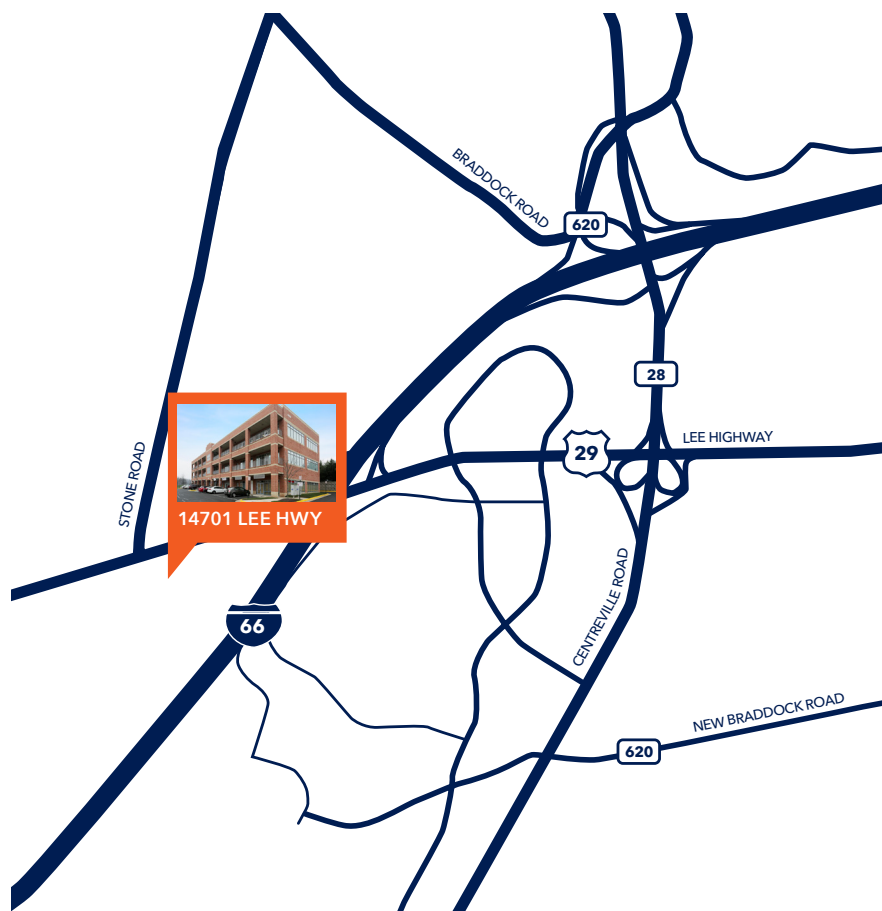
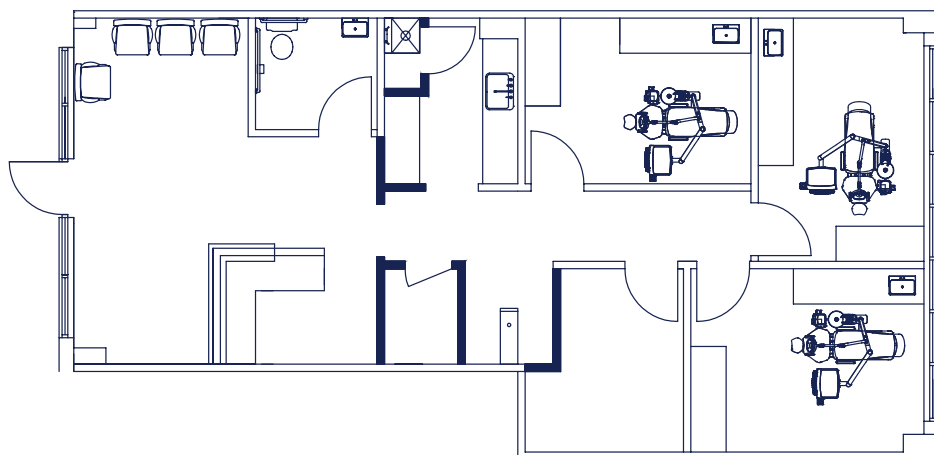


CONTACT US TODAY

MICHAEL FRIEDLANDER
MICHAEL@GZREALTY.NET

3 Bethesda Metro Center, Suite 700 // Bethesda, MD 20814
301.235.1300 // gzrealty.net

Suite 306 | 1,382 SF



CONTACT US TODAY

MICHAEL FRIEDLANDER
MICHAEL@GZREALTY.NET

3 Bethesda Metro Center, Suite 700 // Bethesda, MD 20814
301.235.1300 // gzrealty.net